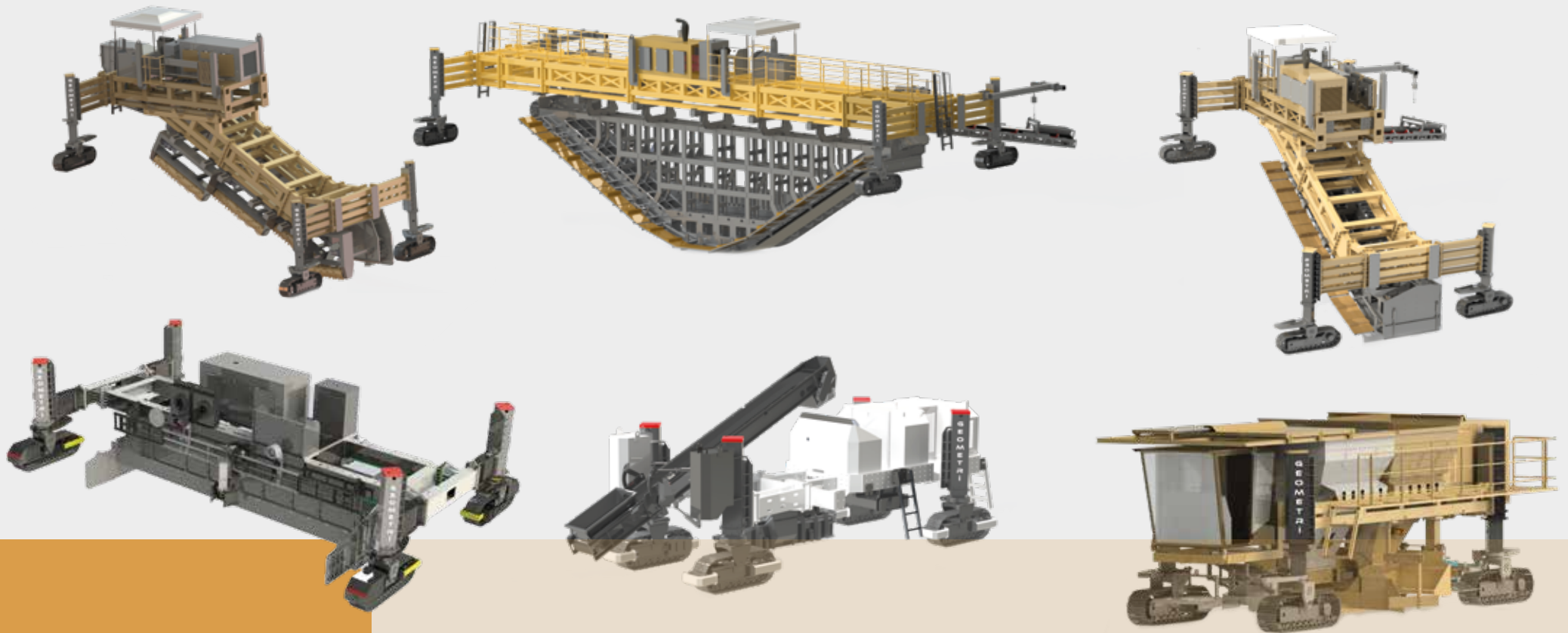




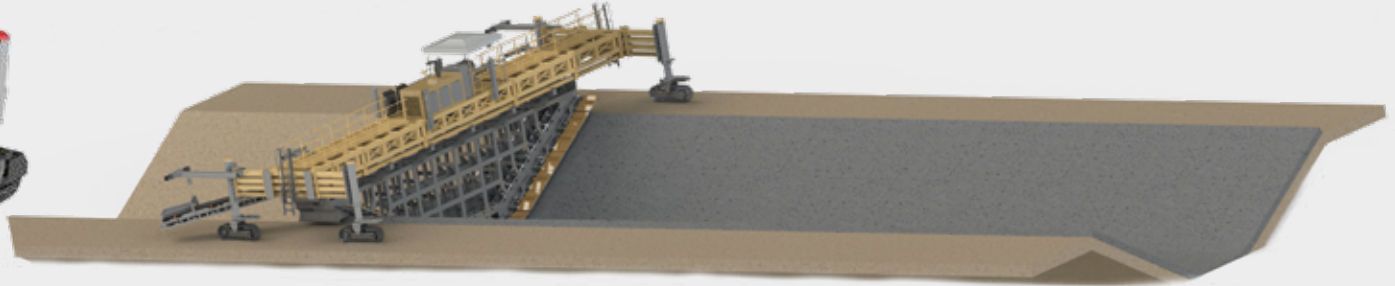
“THE MOST PROFITABLE IN THE INDUSTRY”



SLIPFORM CONCRETE PAVER



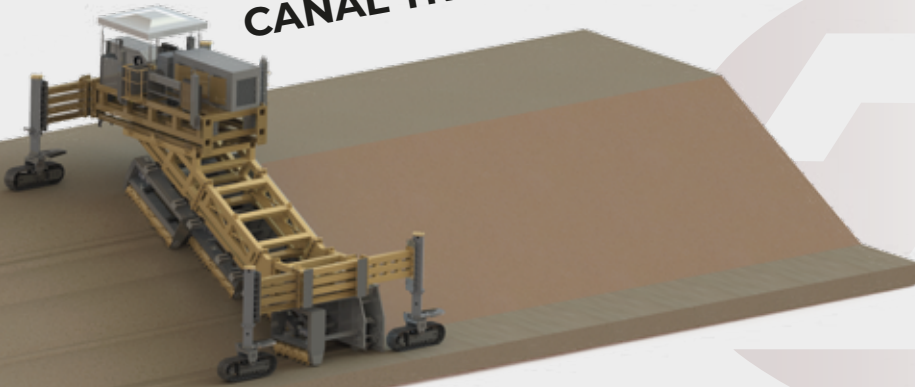
FULL SECTION SLIPFORM CONCRETE PAVER



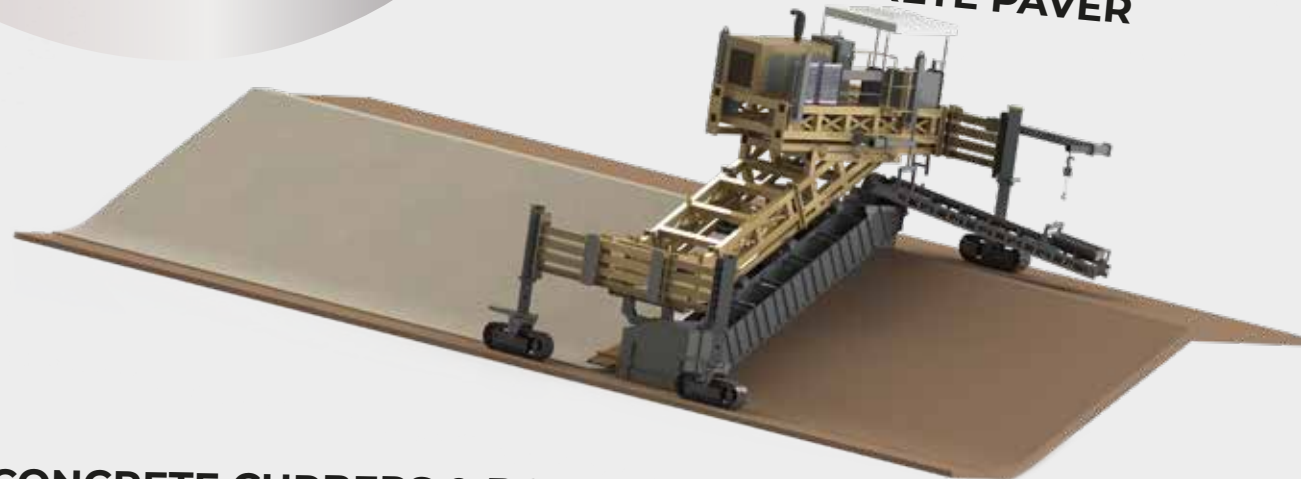
ASPHALT CORE DAM PAVER



CANAL TRIMMER MACHINE



HALF SECTION SLIPFORM CONCRETE PAVER



CONCRETE CURBERS & BORDER PAVER





Geometri Makina, manufacturer of Slipform Concrete Finishers, Concrete Curbers & Border Pavers, CANAL Trimmer Machine and Asphalt Core Paver. A global brand that designs the future of its sector with its vision focused on quality, sustainability and innovation in the world.

Since its establishment in 1992, it has started production with the most advanced technology in 2010 with its experience in the sector, and offers value-added products that cover many areas in life with its environmental and human-oriented approach.

Geometri delivers its machines to the whole world, especially to Europe , Southern America, Middle East, North of Africa and Asia. Geometri aims to be the leader in the world of concrete Finishing and Paving with its special production advantage suitable for each project all around the world .

Geometri successfully manages the procurement process all over the world in order to meet the demands on time, in the desired quality and in a sustainable manner, within the scope of quality policies based on customer satisfaction while producing at international standards in service and product quality.

In line with the principle of continuous improvement, it develops innovative projects that enable the product portfolio to be expanded and the productivity to be maximized.

Geometri, which broke its own records with its recent sales, supports the financial advantages of its products in construction sites with concrete data.

Examination of the project not only with its sales but also with the consultancy services that are in the process until the implementation in the project area after the sale reveals its claim in its products.

Until today, "Geometri " Machines have come to the fore in many projects. It has produced the world's largest full-section concrete paver with its know-how from various project references.

Geometri Makina continues to design the future for our world with its focus on quality, sustainability and innovation.

Geometri

Devoted, honest, ergonomic and economical solutions..



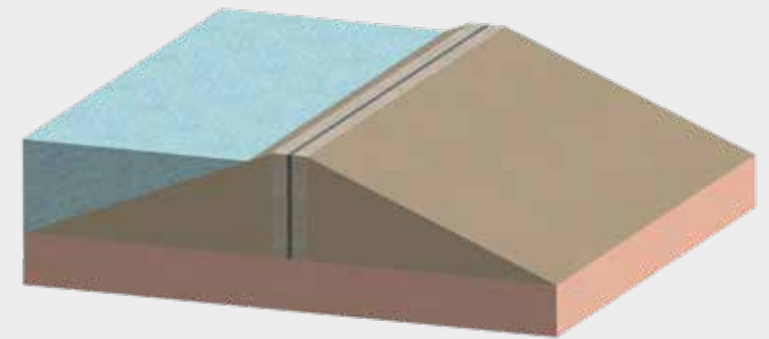
ASPHALT CORE ROCK FILLING APPLICATION

ASPHALT CORE PAVER ACDR X-4

This type of dam used in the world especially in European countries, which is becoming a widespread dam building technology as known "asphalt-core dam". At the same time, asphalt core rock filling application is made in the ponds. Even if leakage occurs due to the high permeability of the rock, there is no danger of water penetration of the anti-leakage asphaltic core as it works as a big seal for preventing water flowing through the structural design of dam.

How does it apply?

An impermeable surface is created by forming a concrete platform between the rock foundation and the asphalt core, and the asphalt core is properly placed along the foundation and concrete gallery.





www.geometrimakina.com

The surface to be applied should be chipped and this surface should be washed and cleaned of free materials and dust. Afterwards, an adherence increasing primer (Bital-S) should be applied to the surface. After the primer is applied, the adherence feature increases and becomes active between 2 and 5 hours depending on the ambient temperature. Sand mastic is applied to the primed and cured surface.

In order to be able to apply, the previous asphalt layer must be at a certain temperature. If necessary, the previous asphalt is heated to ensure full adhesion between layers. For paving, the previous surface must be cleared of free materials or water in light rainy weather. In these cases, the asphalt must be cleaned before application can be made.





ADVANTAGES

The most important advantage of asphalt core application is that its permeability is almost negligible and it is used in much less amount compared to clay core. There is no crack formation problem in the application of front face concrete coating, which is another method. This is a serious cost and time saving.

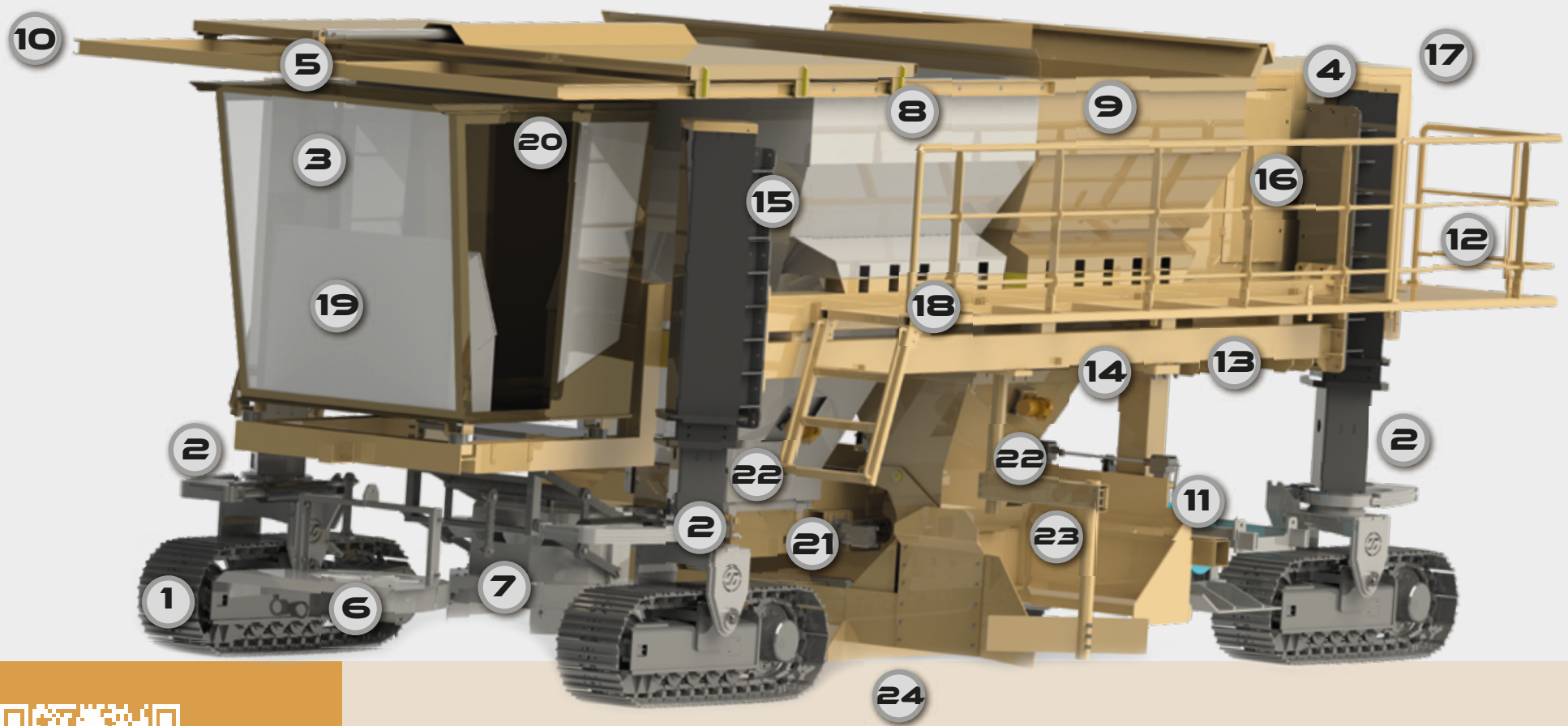
In addition, the frequency of maintenance is longer than other dam applications. It is easier to apply. It is earthquake resistant. Material supply is easy.

Another advantage is that the asphalt casting job is more resistant to aggressive and corrosion weather conditions.



OPTIMUM COMBINATION IN THE ASPHALT CORE

- IMPERMEABILITY
- AT CERTAIN LIMITS OF DEFORMATIONS AND REMAIN STABLE AGAINST HYDRAULIC
- AGAINST SHEAR STRESS STRENGTH
- EASY WORKABILITY



ASPHALT CORE DAM ACDR X-4



- 1** PALLETS
- 2** SENSORS
- 3** OPR. CONTR. CABIN
- 4** MOTOR CABIN
- 5** LIGHTNINGS
- 6** PRE-CLEANING SYS.
- 7** INFRARED SYSTEM
- 8** ASPHALT BUNKER
- 9** FILTER BUNKER
- 10** BUNKER PLUG
- 11** COMPACTORS
- 12** PROPANE GAS TUBE
- 13** EMERGENCY STOP
- 14** MINI CONTROL PANEL
- 15** CRAWLER HYD. JACK
- 16** 380 VOLT GENERATOR
- 17** COOLING SYSTEM
- 18** WALKWAY / PLATFORM
- 19** CONTROL PANEL
- 20** AIR CONDITIONER
- 21** CONVEYOR
- 22** VIBRATORS
- 23** TAMPER SYSTEM
- 24** MOLD



ACDR X-4

As the most needed energy today, electricity is a resource whose consumption increases day by day. ACDR X-4 is the leading actor in the hydroelectric dams created for this and is the pioneer of asphalt core dams. ACDR X-4 builds a wall with a special mixture of asphalt on the body of the dam and filling material on both sides to ensure water tightness and non-permeability in electricity generating dams and prevents water passage. Since ACDR X-4 provides maximum compression, the reliability and durability of the dams are kept at the maximum level. Thanks to its high technology, it can do everything in automatic mode.

“The most important factor for savings in dams is the time. With the Asphalt Core application, you reduce your cost by diminishing the project time by 30 percent. ”

ACDR X-4 Asphalt Core Paver provides savings up to 40% in fuel consumption with the hydraulic design created by Geometri.

These values are the real conditions measured in previous projects.



THE MOST IMPORTANT SAVING FACTOR IS TIME & OPERATIONAL





www.geometrimakina.com



www.geometrimakina.com

PRACTICAL AND SAFE OPERATION

Thanks to the high-tech automation system, the operator only uses the start stop button in full automatic mode. Sensors constantly adjust the direction, level, slope, steering wheel of the machine very precisely and maintain the paving quality. Forward and backward speeds can be adjusted.

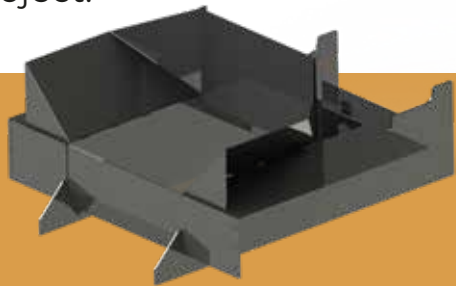
CONTROL PANEL

It is designed for easy use of the ACDR X-4, and the operator can access all kinds of information, data, and signals easily . At the same time, it can follow the level of the machine and the angle of the steering wheels instantly with the help of digital screens.

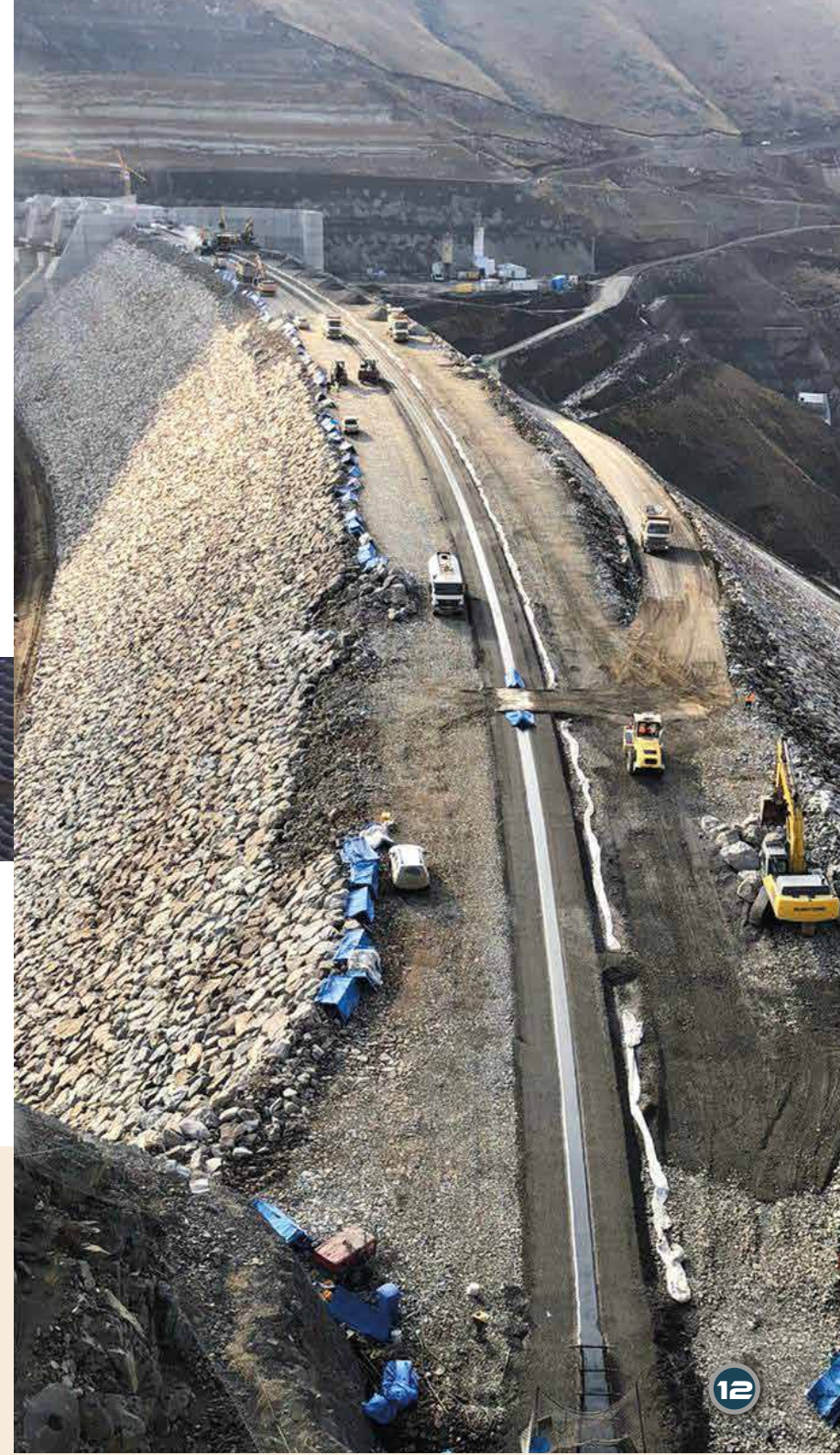


MOLD

“Geometri” designs the mold of ACDR X-4 specifically for the project. The mold can be produced in a suitable size for every project.



SUITABLE MOLD FOR EVERY PROJECT



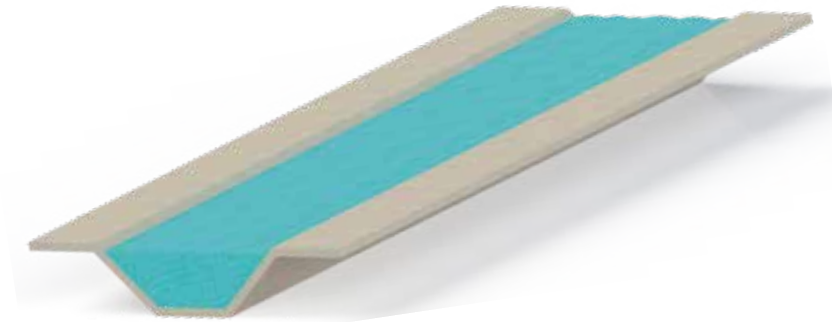
FULL SECTION SLIPFORM CONCRETE PAVERS

SLIPFORM CONCRETE PAVERS

It is used for concrete laying in working areas such as water Canals, concrete profiles, irrigation Canals, drainage Canals, highways, at concrete shipping yards of ports and runways and concrete slabs of airports, and concrete ponds .

How Does it Work?

The concrete mixer discharges the concrete inside the conveyor of the paver. The concrete transferred from the conveyor to the screw which is evenly distributed on each side of the mold. With the help of the vibrators inserted in the mold, the concrete is compressed homogeneously and laid with a sliding mold and plate .





SPECIFICATIONS OF FULL SECTION SLIPFORM CONCRETE PAVERS

- Geometri Automation System
- Special Production Vibrators
- Sensitive Sensors
- Full Section Mold
- Improved Maneuverability
- Heavy-Duty Distributing screw
- Double Feeding Conveyor



**THE BIGGEST CONCRETE SLIPFORM
FINISHER IN THE WORLD
“GSP-160”**

ADVANTAGES



SUITABLE FOR EVERY PROJECT

The mold of Geometri Concrete Pavers are specially produced for each project and designed in the desired CANAL dimensions.

SPECIAL PRODUCTION VIBRATORS

Specially produced high-performance vibrators keep the vibration at the highest level, distribute the concrete homogeneously and bring the surface to perfection.

DURABLE MOLD

The mold surface in contact with the concrete is extra strengthened against abrasion.

MULTI-PURPOSE CHASSIS

With the same machine, it can be used in many projects such as straight roads, canal types, airports, highways by simply changing the mold that is designed in modular principle & the structural modular as extensions or frame insertions.

FUEL SAVING

With its hydraulic design, it saves up to 40% in fuel consumption.

PREVENTS CONCRETE LOSS

It prevents concrete losses in the laying process with its high-precision sensors and special automation system.

OPERATOR PLATFORM

While the operator is on the machine, he can easily produce the desired side of the machine.

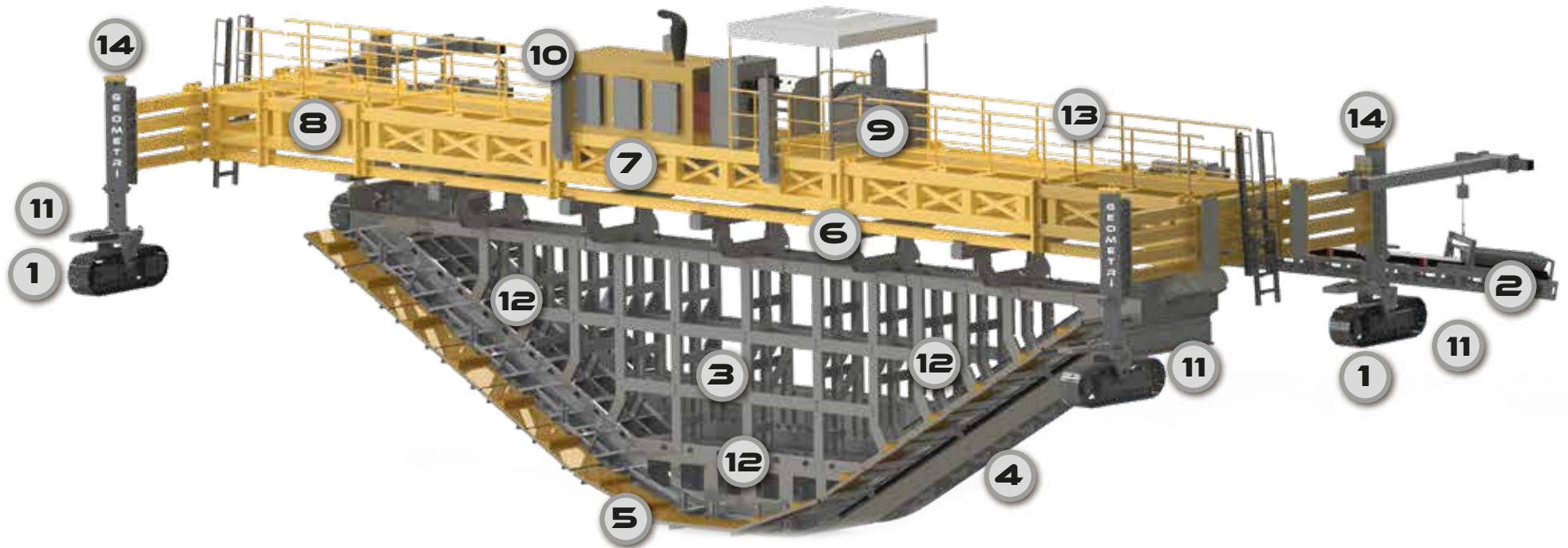
MODULAR MOLD

Considering the variable V-ditches dimensions in your project, it has produced the patterns with the add-remove method according to the required poured concrete section.

ONE MACHINE

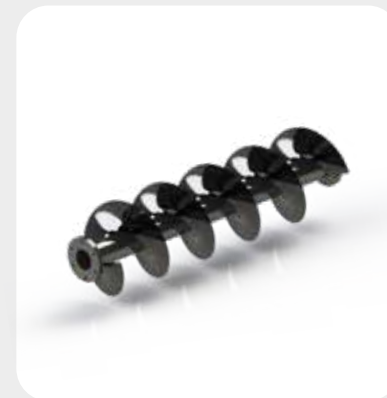
MANY DIFFERENT

PROJECTS



FULL SECTION SLIPFORM CONCRETE PAVERS

- | | |
|-----------------------------|-------------------------------|
| 1 PALLETS | 8 EXTENSION CHASSIS |
| 2 CONVEYOR | 9 CONTROL PANEL |
| 3 MOLD | 10 ENGINE |
| 4 DISTRIBUTING SCREW | 11 SENSORS |
| 5 PLATFORM | 12 HYDRAULIC VIBRATORS |
| 6 MOLD CONNECTION | 13 WALKWAY/ PLATFORM |
| 7 MAIN MACHINE | 14 LIGHTNING SYSTEM |





www.geometrimakina.com

THE BIGGEST CONCRETE SLIPFORM
FINISHER IN THE WORLD
“GSP-160”



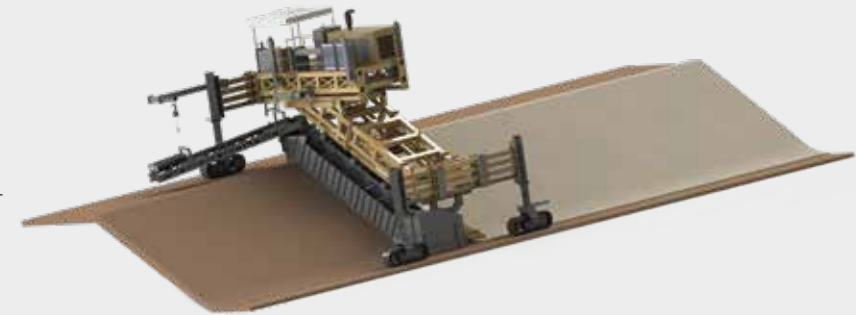
HALF SECTION SLIPFORM CONCRETE FINISHERS

It is used for laying concrete in working areas such as water Canals, irrigation Canals, drainage Canals.

How Does It Apply?

The concrete mixer discharges the concrete inside the conveyor of the paver. The concrete transferred from the conveyor to the screw which is evenly distributed on each side of the mold. With the help of the vibrators inserted in the mold, the concrete is compressed homogeneously and laid with a sliding mold and plate .

SLIPFORM CONCRETE FINISHERS





www.geometrimakina.com





www.geometrimakina.com

SLIPFORM CONCRETE PAVERS

INSET SLIPFORM PAVERS

Usaged Areas

It is used for concrete laying in working areas such as motorways, trunk roads, airport runways, container storage areas or railway tracks, highways.

How Does It Work?

Concrete is poured in front of the paver. The concrete in the heap is distributed equally to all sides with the help of Geo-Shovel. Concrete is compacted homogeneously with the help of hydraulic vibrators in the mold. With the Tamper-Bar system, large pebbles on the concrete surface are pushed to the ground and paving is done with a slipform. With the geo-flat system, Geometri slipform pavers automatically trowel the concrete surface to perfection.



SPECIFICATIONS OF SLIPFORM CONCRETE PAVERS

- Geometri Automation System
- Special Production Vibrators
- Sensitive Sensors
- Modular Mold
- Optional Side Tie Bar Inserter
- Paver Mode - Transportation Mode
- Telescopic chassis
- Geo-Flat System
- Tamber-Bar System
- Geo-Plough System
- Optional Dowel Bar Inserter





SUITABLE FOR EVERY PROJECT

The mold of Geometri Concrete Pavers are specially produced for each project and designed in the desired paving dimensions.

SPECIAL PRODUCTION VIBRATORS

Specially produced high-performance vibrators keep the vibration at the highest level, distribute the concrete homogeneously and bring the surface to perfection.

DURABLE MOLD

The mold surface in contact with the concrete is extra strengthened against abrasion.

FUEL SAVING

With its hydraulic design, it saves up to 40% in fuel consumption.

PREVENTS CONCRETE LOSS

It prevents concrete losses in the laying process with its high-precision sensors and special automation system.

OPERATOR PLATFORM

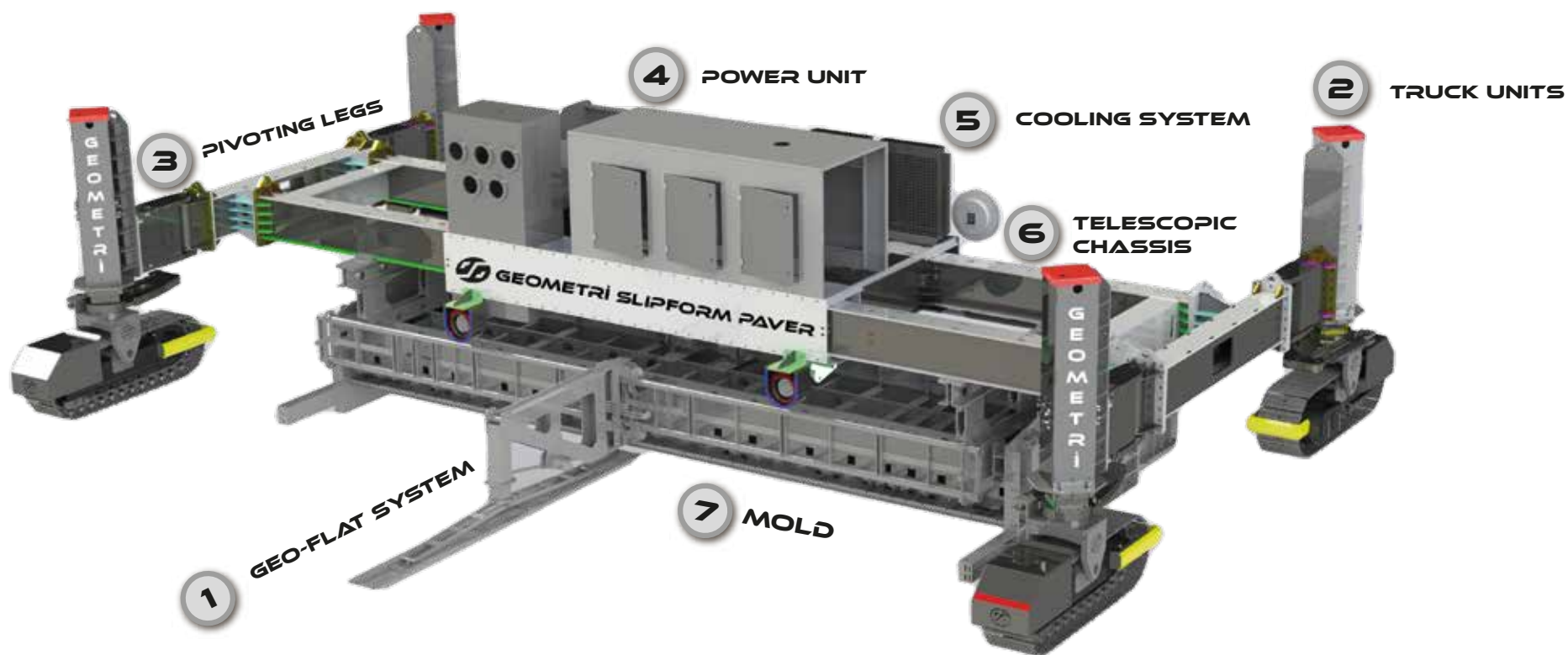
While the operator is on the machine, he can easily produce the desired side of the machine.

MODULAR MOLD

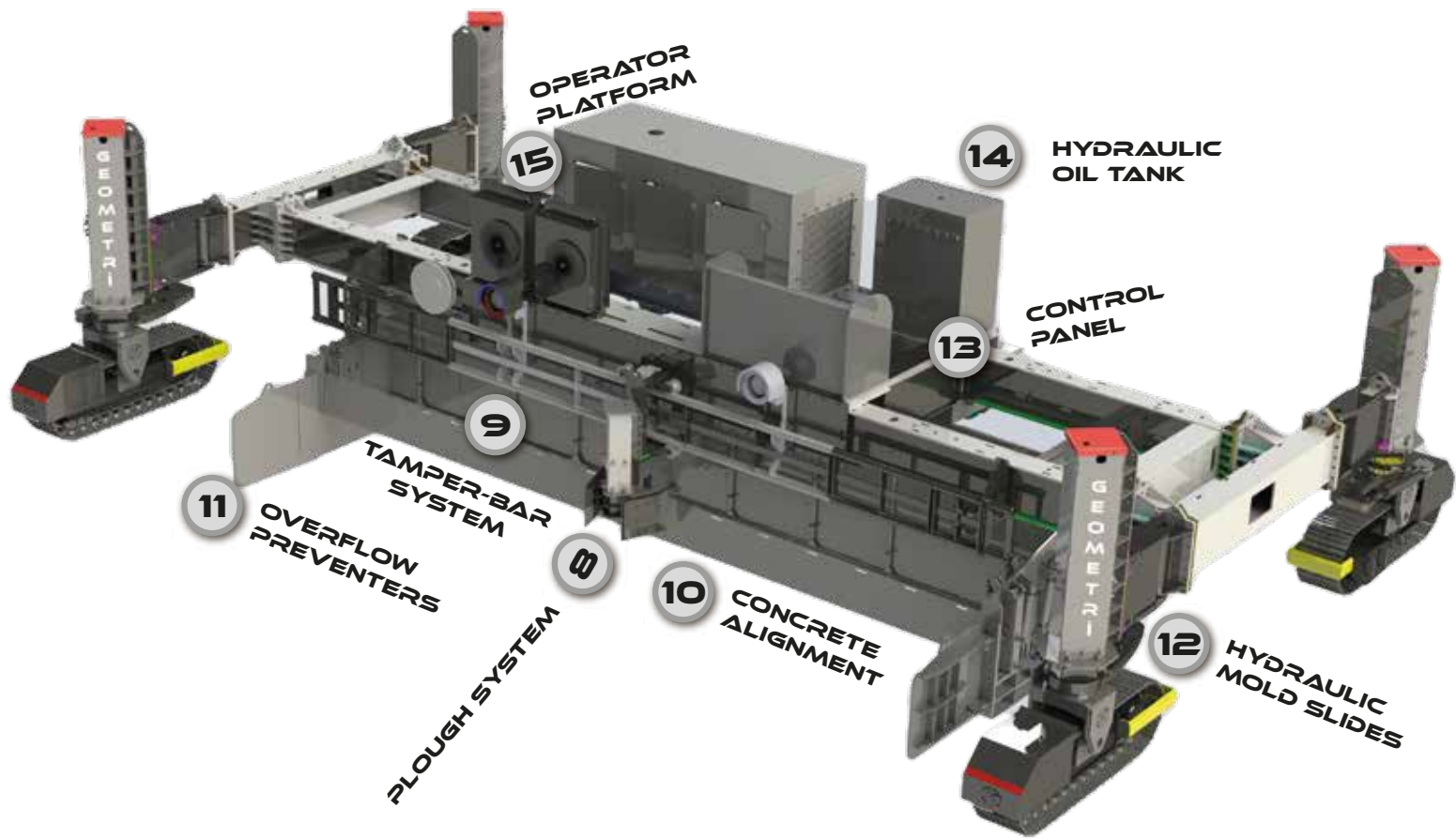
Considering the variable paving dimensions in your project, it has produced the patterns with the add-remove method according to the required poured concrete section.

ONE MACHINE

**MANY DIFFERENT
PROJECTS**



SLIPFORM CONCRETE PAVERS



Fully Automatic Vibrator Positioning

In Geometri Concrete Pavers, the vibrators can be adjusted on the control panel with the buttons the vibrator up and down and vibrator angles with hydraulically.



Control Panel

It is designed for easy use of the Geometri Pavers, and the operator can access all kinds of information, data, and signals easily. At the same time, it can follow the level of the machine and the angle of the steering wheels instantly with the help of digital screens.



Practical and Safe Operation

Thanks to the high-tech automation system, the operator only uses the start stop button in full automatic mode. Sensors constantly adjust the direction, level, slope, steering wheel of the machine very precisely and maintain the paving quality. Forward and backward speeds can be adjusted.

Geo-Flat System

Geo-Flat, which is produced from special mixture materials, reaches the maximum level with vertical and horizontal movements in surface smoothness.



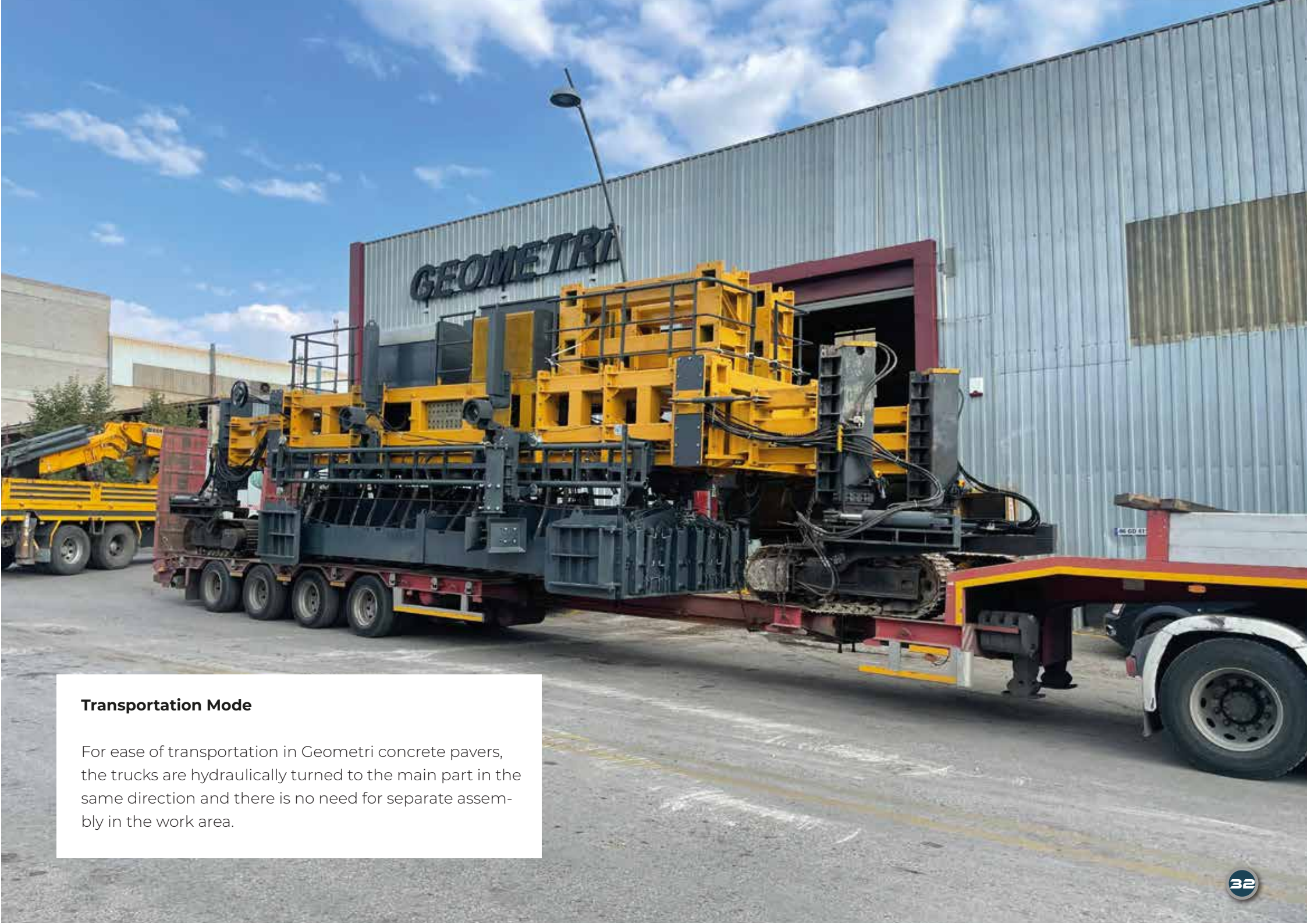
Hydraulic System

Hyd. Circuits pilot pump co-pilot pumps directional valves Hyd. Hoses and pipeline and electronic control-over- hydraulic system are professionally selected with the most powerful and trustable brand names. Geometri's ultimate experience formulated the ideal hyd. System design to empower machines applying the wide range of customer project's needs regarding the stable powerful productive and continuous performance

Telescopic Chassis

The chassis, which extends and contracts on both sides hydraulically, can easily enter narrow roads in variable concrete sizes and can be paved without losing time.





Transportation Mode

For ease of transportation in Geometri concrete pavers, the trucks are hydraulically turned to the main part in the same direction and there is no need for separate assembly in the work area.

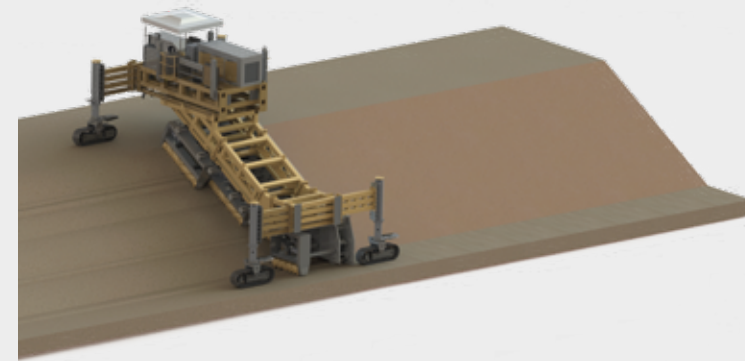
TRIMMER

CANAL TRIMMER MACHINE

While Geometri Canal Trimmer Machines dig and grade inclined with slightly and quickly with practical equipment, the concrete paving process can continue uninterrupted by the paver.

1 GT Series equals : 3 Excavators

Geometri Trimmer makes the work of 3 excavators at the same time. In this way, it provides serious economic gains to its buyers in many areas such as individual machine maintenance costs, fuel, and operational costs.





www.geometrimakina.com

SMOOTH SURFACE AND BASE SOLID CONCRETE

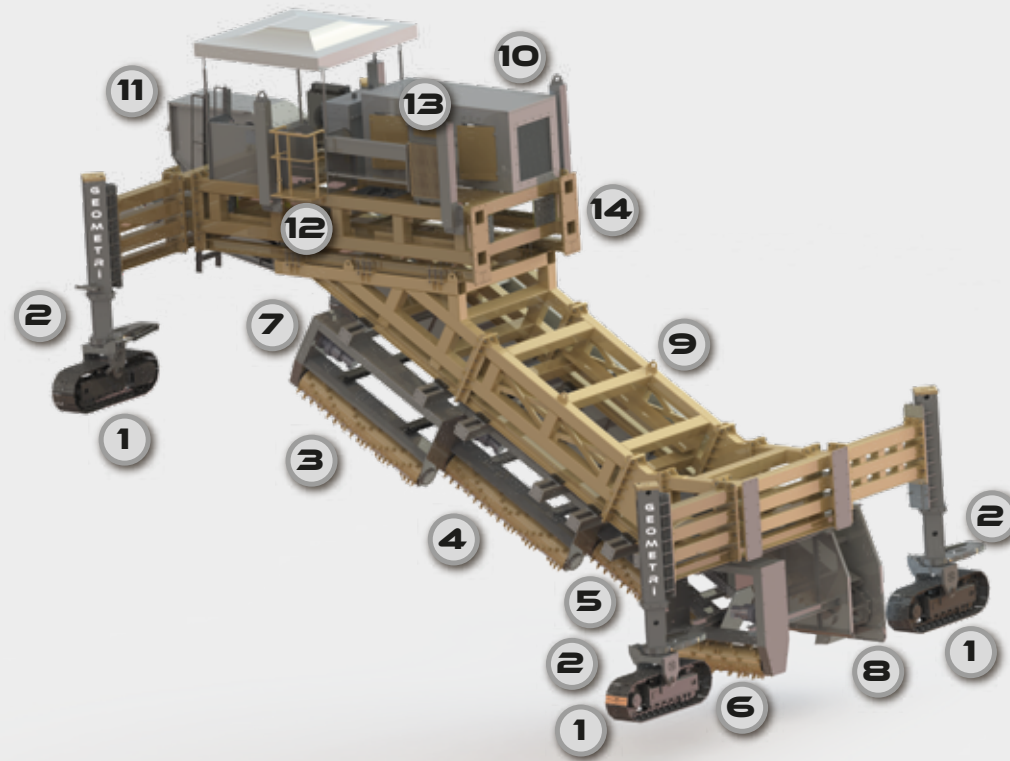
Since Geometri Canal Trimmer Machines perform excavation for grading operations perfectly with its fully automatic and very sensitive sensors, it prevents concrete cracks caused by multi-thickness concrete combinations due to non-precise and exact digging, backfilling and grading operations which cause mixed thickness (thin layer with over thick layer .. etc)of concrete layer with limitless

Save Concrete.

GT Trimmers prevent excessive concrete paving caused by excavation errors as they level the surface equally at every point of the project. In this way, it reduces the project cost while increasing the concrete quality.



GEOMETRI TRIMMERS GUARANTEE AN EXTENDED LONG LIFE OF CUSTOMER'S PROJ-



- 1 PALLETS
- 2 SENSORS
- 3 TOP DRUM/PULLEY TRIMMER
- 4 MIDDLE DRUM/PULLEY TRIMMER
- 5 BOTTOM DRUM/PULLEY TRIMMER
- 6 BASE DRUM/PULLEY TRIMMER
- 7 HYDRAULIC SYSTEM
- 8 SOIL DISCHARGE SYSTEM
- 9 INCLINED MAIN CHASSIS
- 10 ENGINE
- 11 CONTROL PANEL
- 12 MAIN/BASE MACHINE/ENGINE
- 13 HYDRAULIC OIL COOLING
- 14 CHASSIS EXTENSION CONNECTION







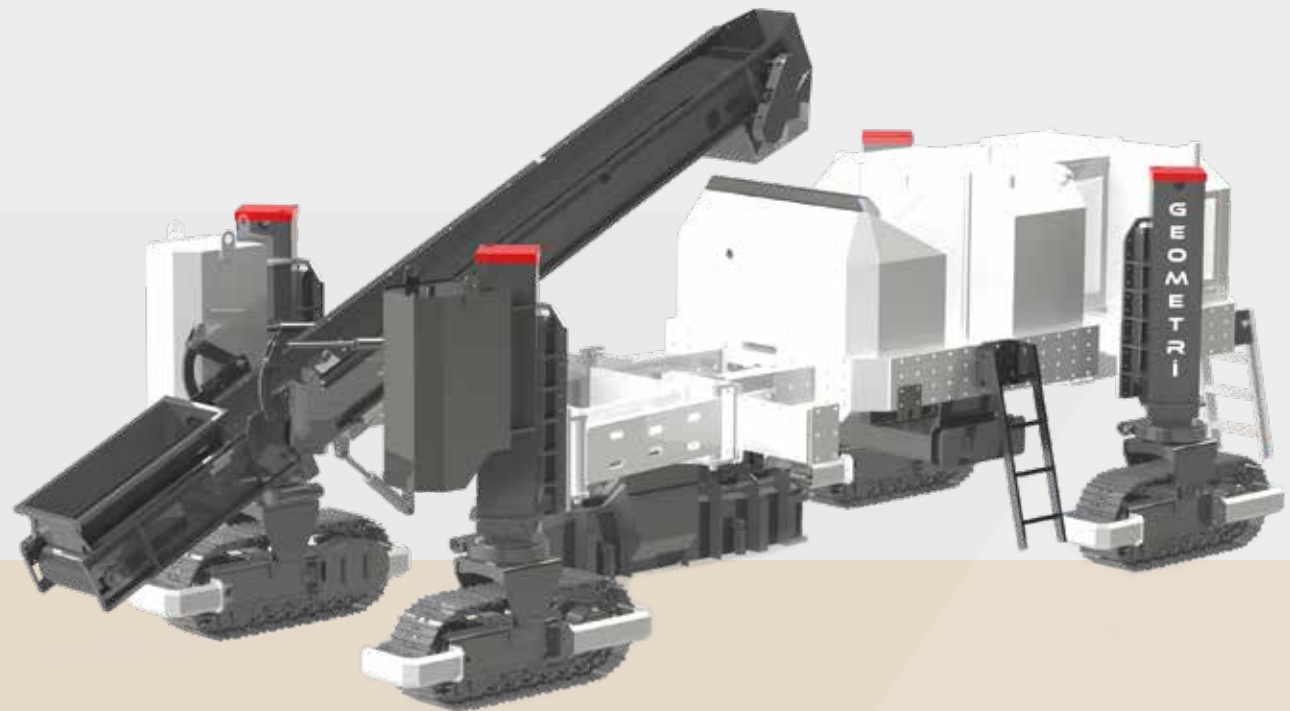
MULTIPURPOSE USAGE AREA

CONCRETE CURBERS & BORDER PAVERS

Geometri concrete curbers & border pavers can lay new Jersey barriers, cable ducts and various concrete walls at the same time by simply changing the mold in addition to the border paving.

Where to use?

- Handle Curb & Gutter Work
- New Jersey Barrier
- Cable Canals
- Irrigation Ditches
- Straight Roads
- Parking Lots
- Curbs in Various Sizes
- Sidewalks
- Concrete Walls
- Highway Safety Barriers





www.geometrimakina.com

REINFORCED CHASSIS

The chassis of the Geometri concrete Curbers & Border Pavers have been strengthened in terms of structure and strength. In this way, the mold can be attached to the desired direction (right, left, back and middle) of the machine.

Conveyor

Conveyor can move up-down and left-right. It can also lengthen and shorten. In this way, concrete feeding can be done from anywhere.



GEOMETRI CONCRETE CURBERS & BORDER PAVERS GUARANTEE AN EXTENDED LONG LIFE OF CUSTOMER'S PROJECTS.



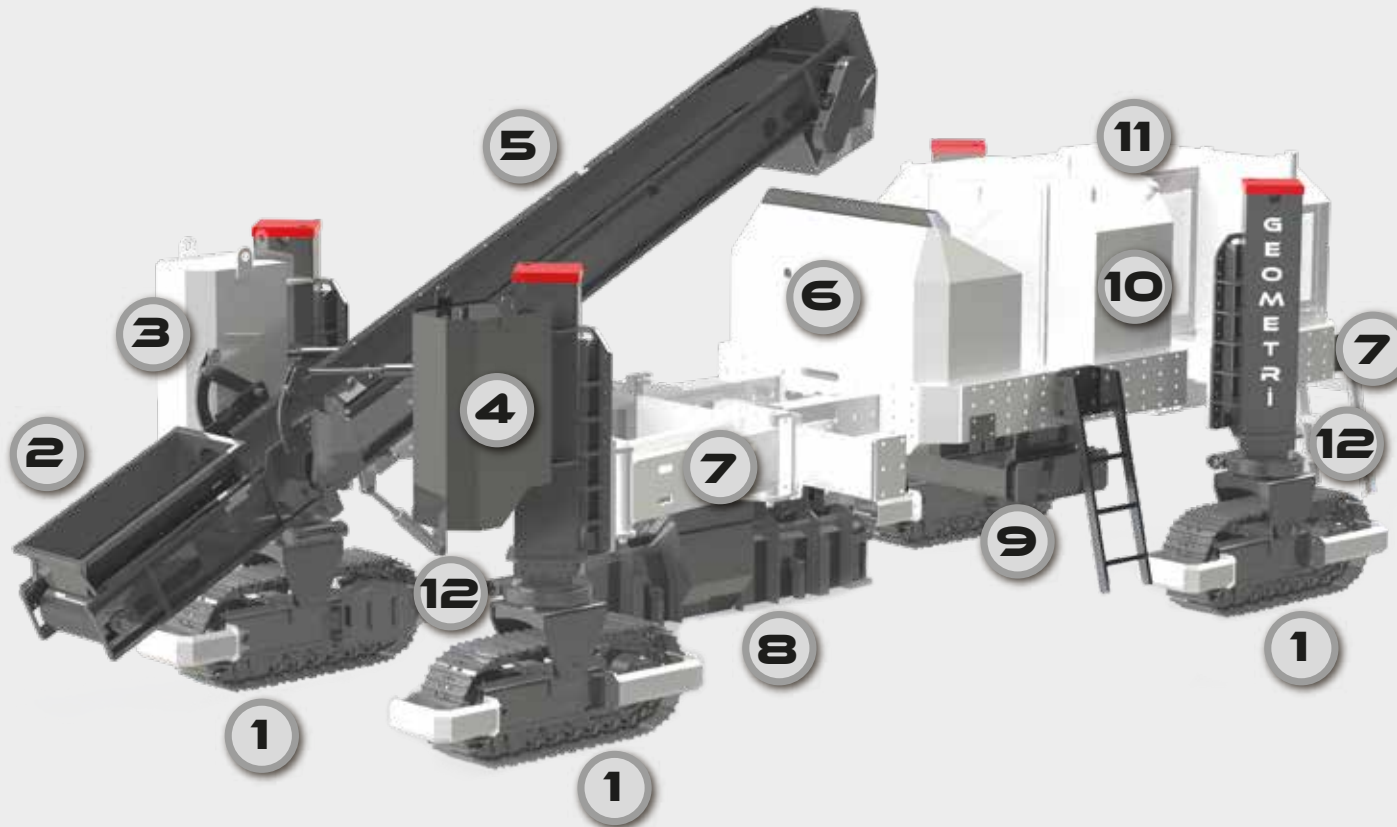
Extendable Legs

GC 25's feet are designed to be opened and closed with a single button. In this way, it can be adjusted according to the mold used and the working area.

Special Production Vibrators

Specially produced high performance vibrators keep the vibration at the highest level, distribute the concrete homogeneously and bring the surface to perfection.

VERSATILE USAGE



CONCRETE CURBERS & BORDER PAVERS

- | | |
|------------------------|---------------------------------------|
| 1 PALLETS | 7 EXTENDABLE LEGS |
| 2 TANK | 8 CONCRETE SPREADING MOLD |
| 3 ADDITIVE TANK | 9 MOLD CONNECTION (RIGHT/LEFT) |
| 4 WATER TANK | 10 HYDRAULIC COOLING SYSTEM |
| 5 CONVEYOR BELT | 11 ENGINE |
| 6 CONTROL PANEL | 12 SENSOR |





www.geometrimakina.com

GC - 15

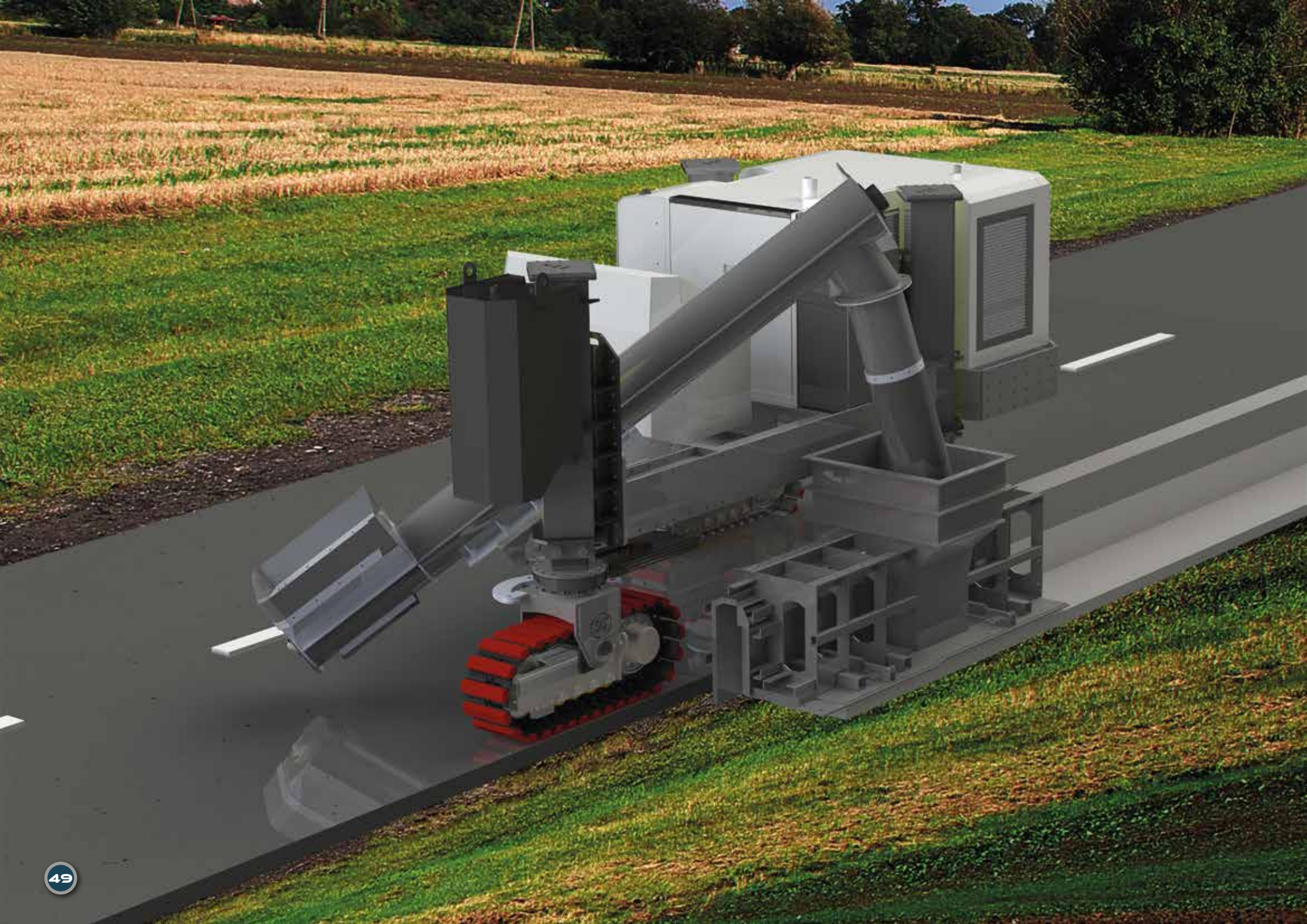
CONCRETE CURBERS & PAVERS

Geometri concrete curbers & border pavers can lay new Jersey barriers, cable ducts and various concrete walls at the same time by simply changing the mold in addition to the border paving.

Where to use?

- New Jersey Barrier
- Cablo Canal
- Straight Roads
- Curbs in Various Sizes
- Irrigation Ditches
- Side Walks
- Parking Lots





GC - 10

CONCRETE CURBERS & PAVERS

Where to use?

- Cablo Canal
- Curbs in Various Sizes
- Irrigation Ditches
- Parking Lots





MOLD

Reinforced mold design with a robust frame to maintain the ultimate finishing during extrusion of well compacted fresh concrete that guarantees the lifetime durability of mold and perpetual extreme smooth of finishing quality.



CONVEYOR

Mechanical adjustment of conveyor position right/left up/down easy setting durable design .

FUEL CONSUMPTION

The Hydraulic design has been developed to drive the machine with the maximum fuel saving for GC-10 during operation and paving . This boosted Hydraulic system increases the life of the machine and reduce the consumption fuel .



THE MOST IMPORTANT THING IS EARNING MONEY, REDUCING COST AND SAVING **TIME.**





Hydraulic System

Hyd. Circuits pilot pump co-pilot pumps directional valves Hyd. Hoses and pipeline and electronic control-over- hydraulic system are professionally selected with the most powerful and trustable brand names. Geometri's ultimate experience formulated the ideal hyd. System design to empower machines applying the wide range of customer project's needs regarding the stable powerful productive and continuous performance .

Sensors

Thanks to the sensitive sensors of the GC-10, it corrects disturbances of ground by constantly adjusting the elevation, direction and slope of the machine. It maintains the quality and smoothness of the paving.

Cooling System

Boosted special cooling system designed to meet all overloads and continuous operational demands at high temperature ambient in the toughest conditions of working scope and environment. This special design protects the whole involved components from wearing out during different operational surroundings and it guarantees the extreme performance of curber ma-

**MULTI-PURPOSES
USAGES**



GEOMETRI

www.geotrimakina.com



1246. Street No:36-38-40 Ostim OSB Mah. ANKARA/TURKEY



+90 312 354 33 94



+90 312 354 33 96



+90 535 388 72 99



info@geotrimakina.com



[geotrimakina](https://www.facebook.com/geotrimakina)



[geotrimakina](https://www.instagram.com/geotrimakina)



[geotrimakina](https://www.youtube.com/geotrimakina)